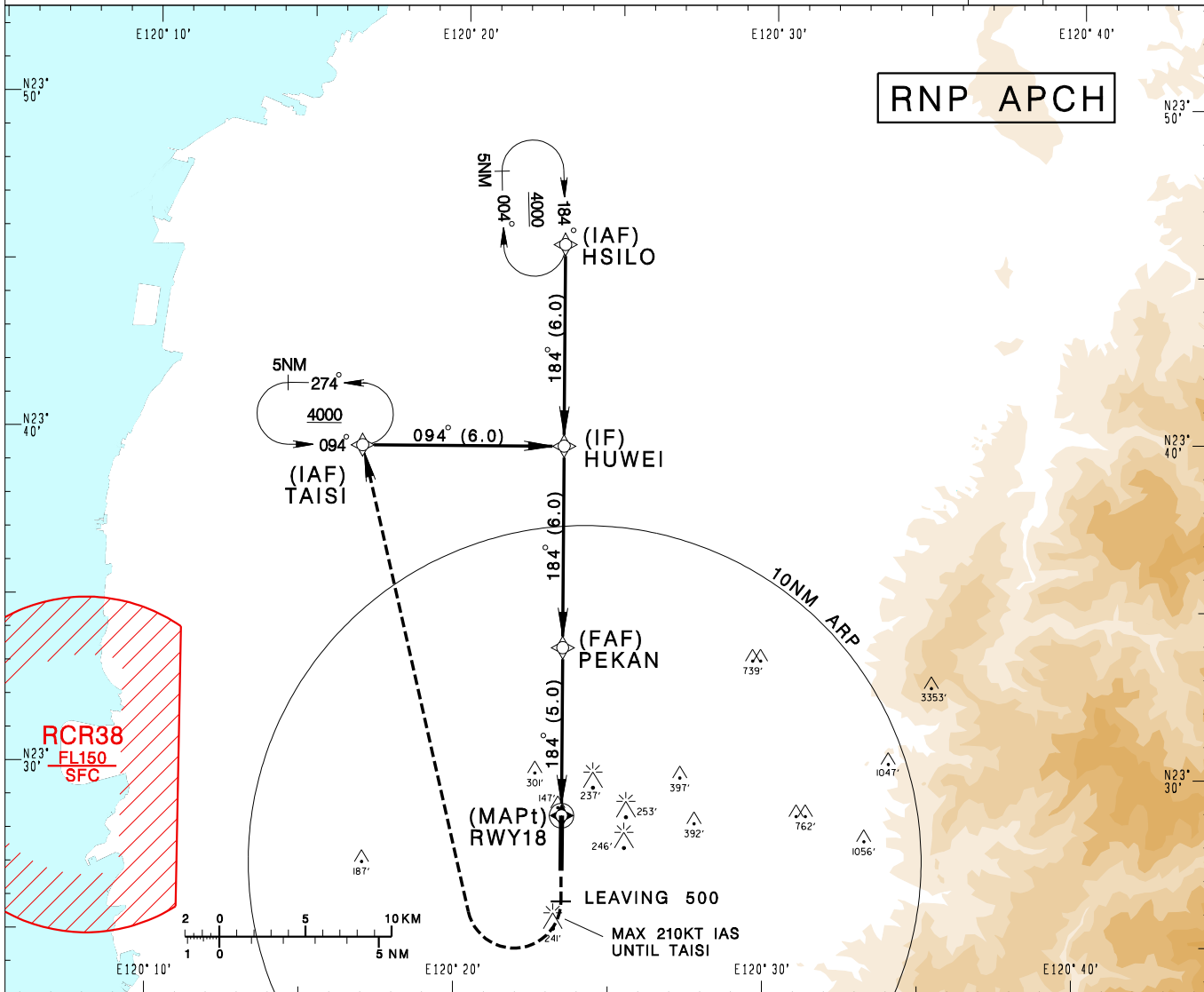


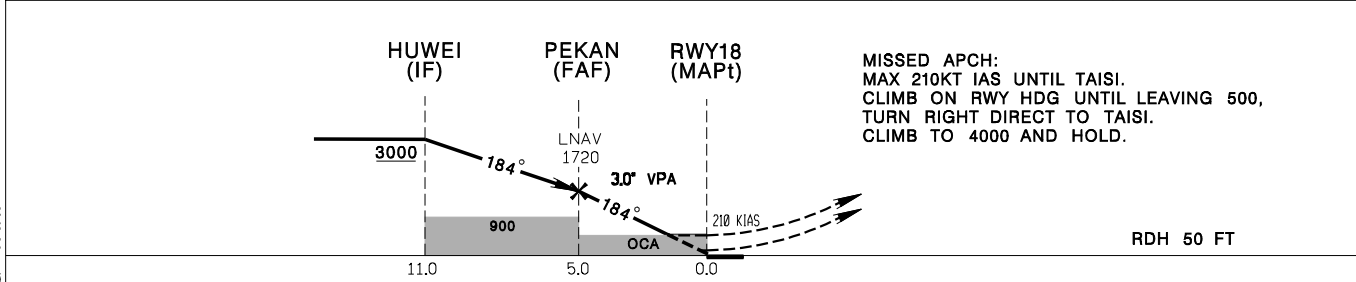
嘉義機場
CHIAYI AD

RCKU
RNP RWY18

KAOHSIUNG APP 120.6 301.0		CHIAYI TWR 118.6 236.6 275.8		VAR 4° W-2023 	13600' MSA ARP 25NM
Apt Elev: 85'	Rwy18 THR Elev: 75'	Trans Level: FL130	Trans Alt: 11,000'		
BEARINGS ARE MAGNETIC; DISTANCES ARE NAUTICAL MILES; ELEVATIONS, HEIGHTS IN FEET					



5	4	3	2	1.2	DIST (NM) to THR 18
PEKAN					DIST (NM) to Next WPT
1720	1410	1090	770	510	ADVISORY ALT



CATEGORY	MINIMA (OCA IN FT, VIS IN M, OCH IN FT)				NOTE 1. CIVIL AIRCRAFT USE WEST TRAFFIC CIRCUIT. 2. BARO-VNAV NOT AUTHORIZED BELOW 0° C. 3. ATS SURVEILLANCE REQUIRED WHEN RCR38 IN USE.
	A	B	C	D	
LNAV/VNAV	443/1700 368	443/1700 368	443/1700 368	443/1700 368	
LNAV	500/1700 425	500/1700 425	500/2000 425	500/2000 425	

CHANGES: UPDATE MAG VAR.